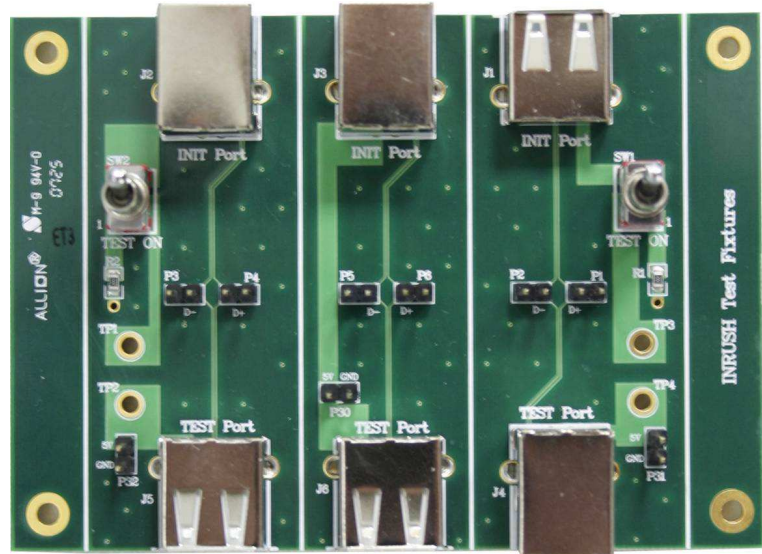




## USB Inrush (SQiDD) Test Fixture

Part No.: USB-TF-INR



## Application

- Design for Full/ Low Speed Device and Host Signal Quality Test
- Design for Full/ Low Speed Device Inrush Test
- Related with “**USB-IF Full and Low Speed Electrical and Interoperability Compliance Test Procedure**” Revision 1.3 Section B.1
- SW1 and SW2 is for Inrush Test. You should keep them on “TEST ON” when doing Full/ Low Speed Signal Quality Test
- “INIT Port” is for link with Host, and “TEST Port” is for link with Device Under Test

## Specification

- 98mm x 70mm x 1.4mm
- Operating Temperature 0° ~ 55° C

### Contact Information:

Fred Wu

Tel: +886-2-26557877 Ext: 1732

E-mail: [Fredwu@allion.com](mailto:Fredwu@allion.com)

<http://www.allion.com/TestTool/USB-test-tool.html>