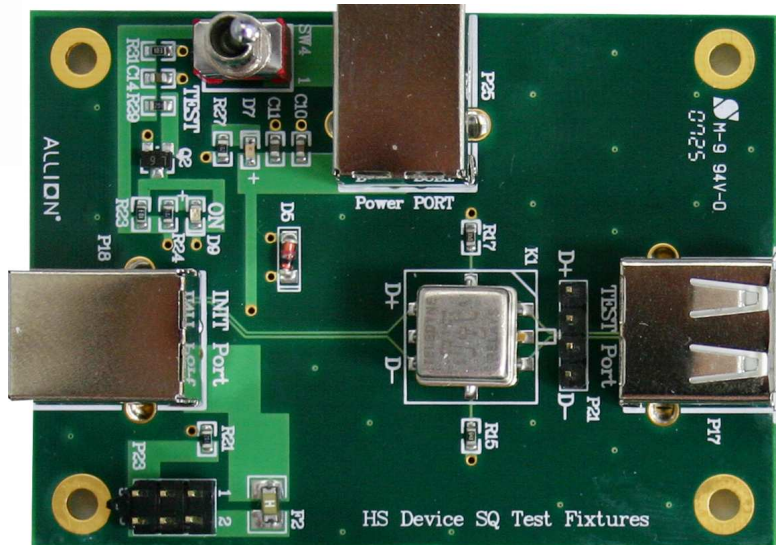




## USB HS Device SQ Test Fixture

Part No.: USB-TF-HS-SQ



## Application

- Design for High Speed Device Upstream Signal Quality Test (EL\_2, 4, 5, 6 and 7)
- Related with “**USB-IF Device High-Speed Electrical Test Procedure**” Section 4.4
- Power Consumption: Normal Mode: 2mA Test Model: 88mA
- Can apply external power over USB cable from “Power Port”
- “INIT Port” is for link with Host, and “TEST Port” is for link with Device Under Test

## Specification

- 70mm x 50mm x 1.4mm
- Operating Temperature 0° ~ 55° C

### Contact Information:

Fred Wu

Tel: +886-2-26557877 Ext: 1732

E-mail: [Fredwu@allion.com](mailto:Fredwu@allion.com)

<http://www.allion.com/TestTool/USB-test-tool.html>